

Introducing Taking Control



In Control – Children's Programme

Nic Crosby
Director, Children and Young People
and South West Region Lead (Adults)

November 2009

in  **Control**[®]

Background

In Control founded 2003 to transform social care system in to one based upon self-directed support

Now with an active membership of 105 Adult Services, 35 Children's Services, a new and fast growing network of Primary Care Trusts and over 100 Provider Services
Offering a coherent and well defined evidence base of self-directed support in practice

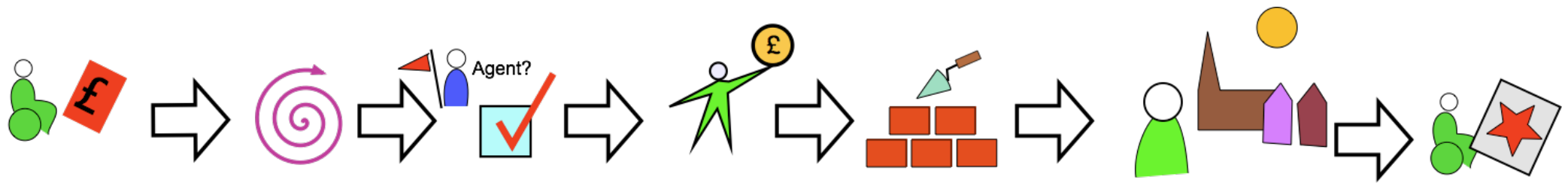
The Children's Programme 'Taking Control' was founded in 2007. The programme focused on extending self-directed support to children and young people receiving support from integrated children's services

The programme referenced work with adult services but set out to understand the differences when this was applied to under 18's and how SDS makes sense across the children's world

Across our membership we have approximately 205 'live' individual budgets for disabled children and young people

If we include individual budgets linked with budget holding lead professionals then we have over 2000 live Individual Budgets for children and young people across the whole service offer from children's services

Our membership programme runs as an annual subscription with an offer of support which includes a mix of on-site support, residential workshops, a regularly updated web site, one day workshop programme. This support is delivered by a team of three people managed by the Director for Children and Young People.



1. My Money: Finding Out How Much

2. Making My Plan

3. Getting My Plan Agreed

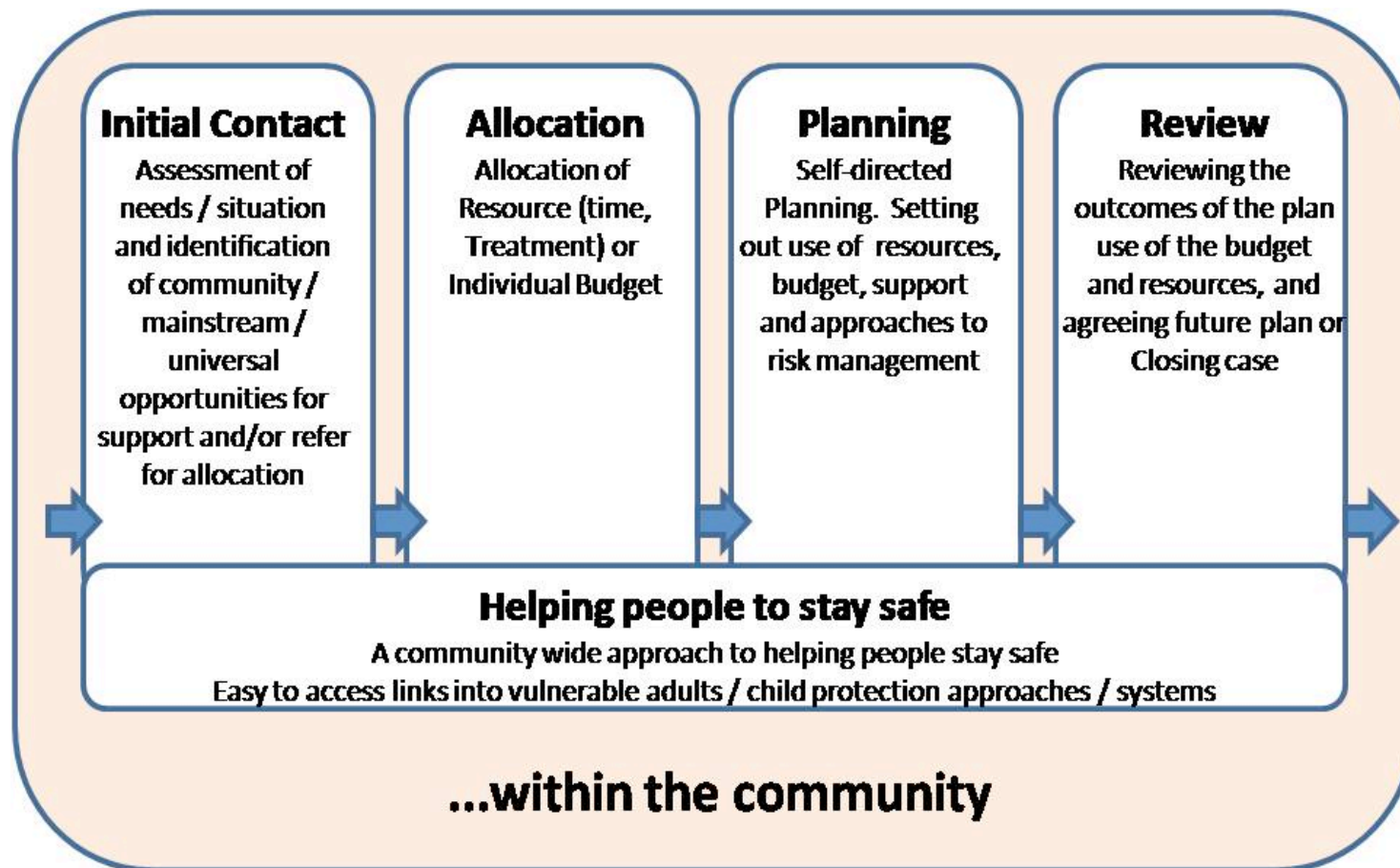
4. Organising My Money

5. Organising My Support

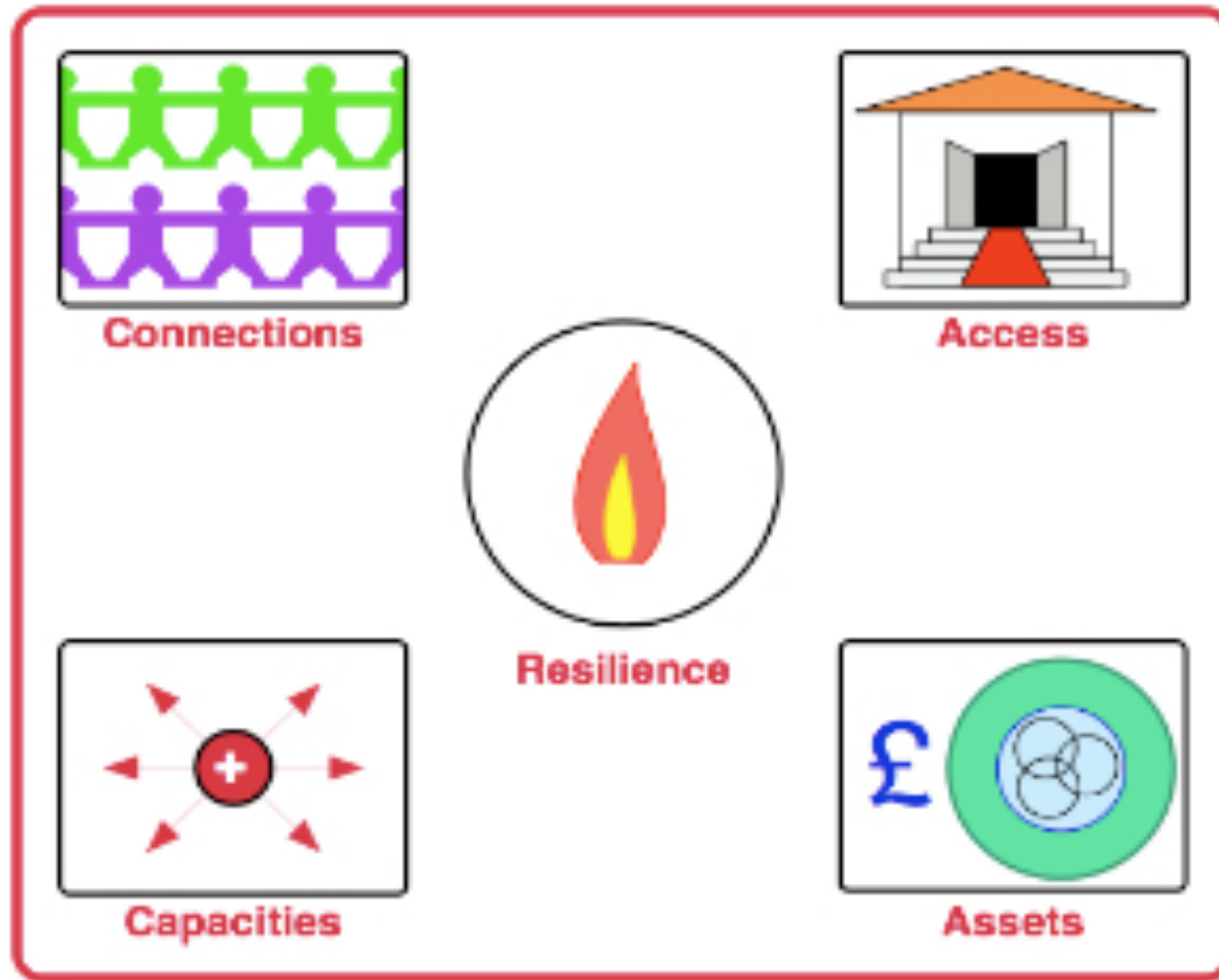
6. Living My Life

7. Seeing How It's Worked

From 'Seven Steps of Self-directed Support' to a common approach.....



.....a common base to a common approach

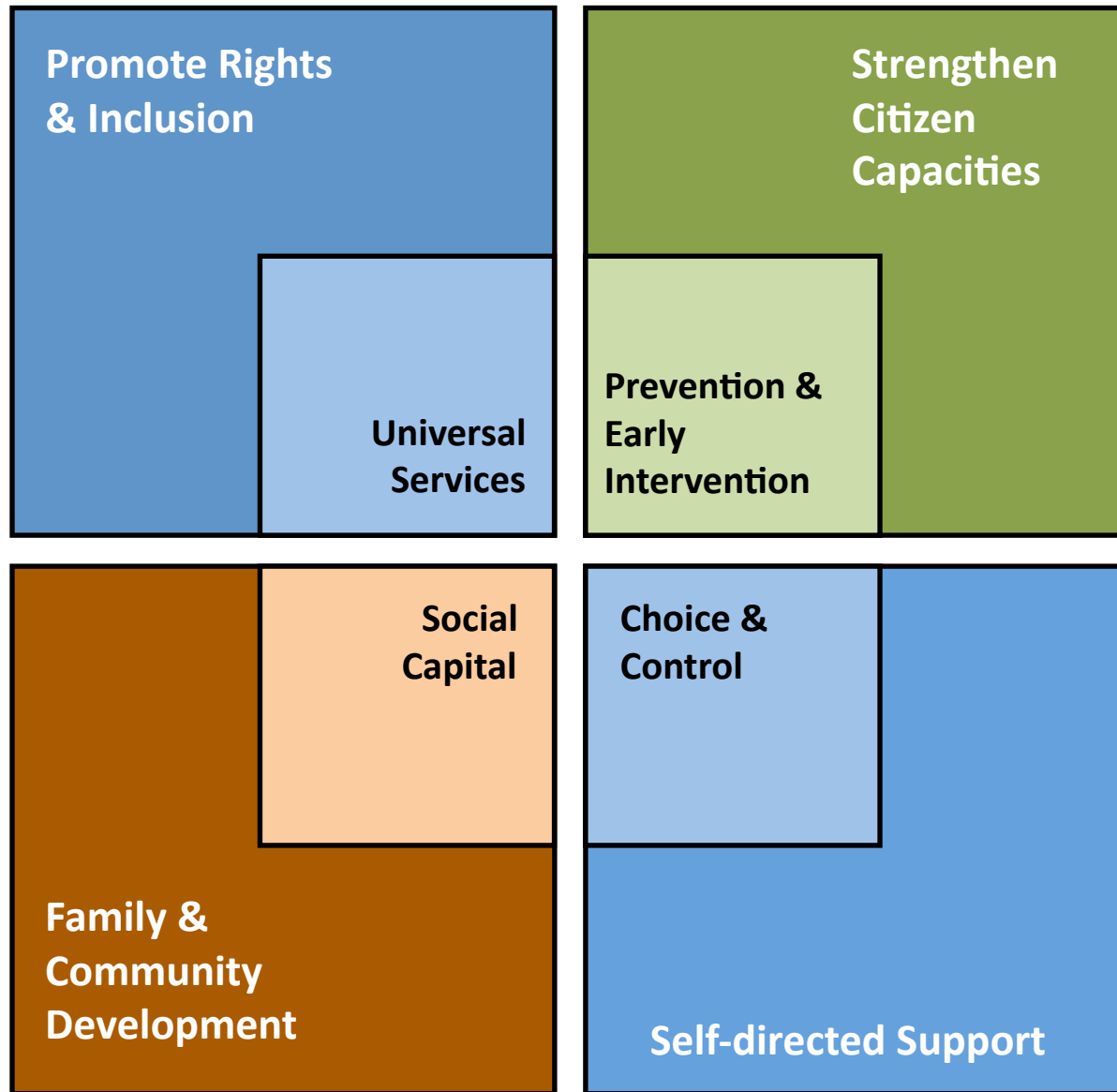




Current work and challenges

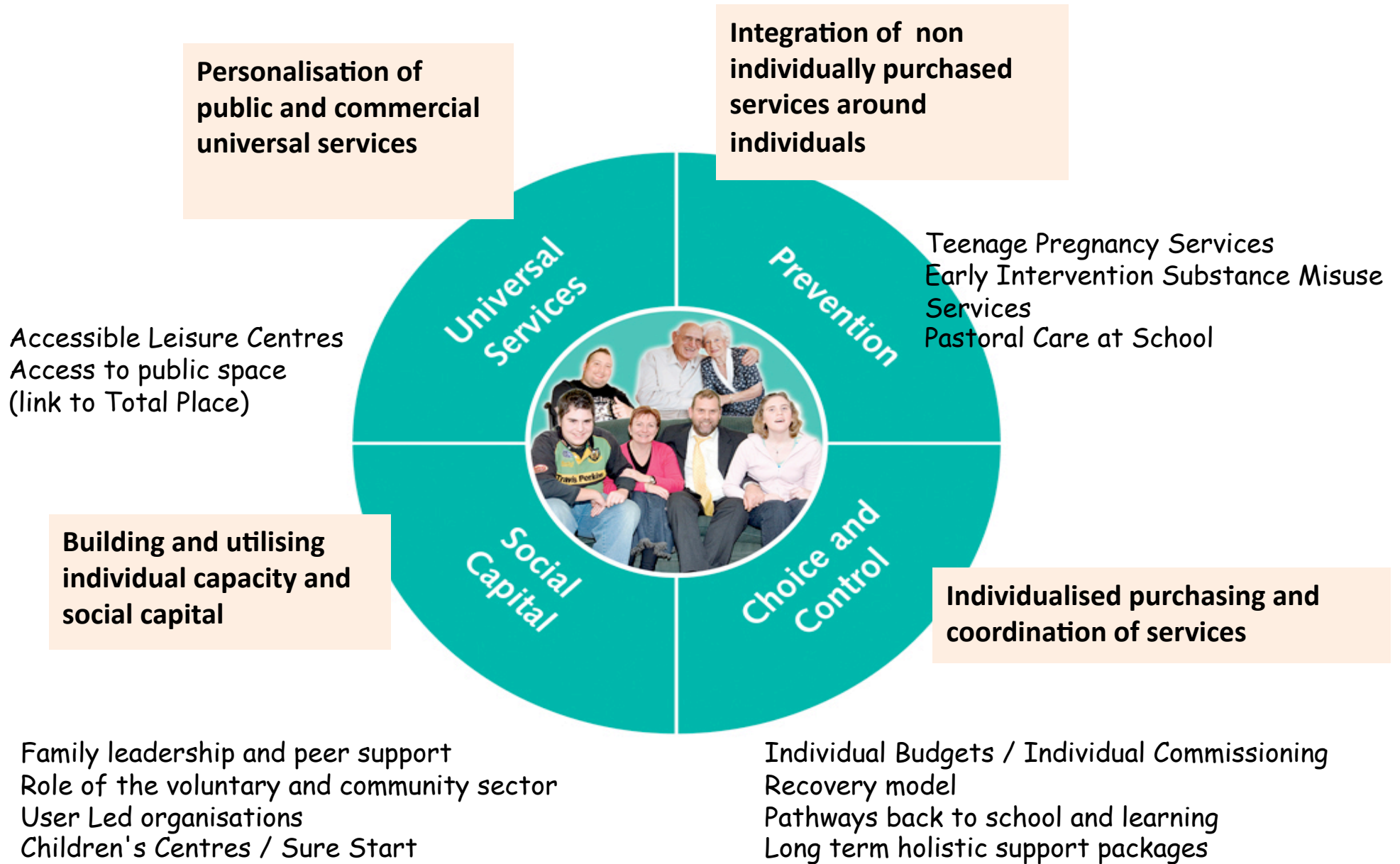
- Building our evidence base – bringing together stories, outcome measures and reporting our work
- Enrolling senior management and leaders in the field – supporting our membership in gaining permission to extend their pilot activities to a larger group of children and families
- Developing our relationship with the Commissioning Support Programme, and in particular with OPM who have been long term partners (BHLIP work and individual commissioning) and linking with work on other Aiming High for Disabled Children workstreams
- Member of the DCSF IB Pilot Advisory Group (5 of the 6 sites are Taking Control members – Newcastle, Gateshead, Gloucestershire, Coventry and Essex)
- Outlining a 'whole life' approach based upon citizenship, across ages and support groups and inclusive of health, education, social care, benefits systems and self-funding
- Raising awareness and understanding of self-directed support as an active and whole system approach to safeguarding i.e. extending safeguarding awareness across the community of people and organisations with clear links into appropriate protection services and risk enablement processes
- Working to include schools, education funders and health colleagues in exploring and contributing to 'integrated' Individual Budgets – building on our LSC Allocation System for post-16 learning for young people with additional learning support needs
- Continuing to grow and support our membership – developing 'whole life membership' for local authorities, children's services and health trusts
- Linking up with prospective 'Right to Choice' DWP sponsored pilots when confirmed

Personal Budgets as only one part of a whole system approach



Understanding the 4 quadrants
Dept of Health model

- Personal Budgets**
- Transparent allocations
 - Developing a Support Plan addressing the needs of the child in a flexible, individualised and creative way
 - Managing money and organising support
 - Safeguarding



What next?

On a practical level...

A Front Door / Every Child Matters Resource Allocation / Planning and Support / Reviews

.... we have a key set of tools, we have a skeleton process that works consistently across sectors and offers the potential of developing integrated budgets around a child

..... exploring links with Signs of Safety / Child Protection and Team Around the Child approaches

..... setting out a consistent 'solutions focused' approach to supporting children and young people where Individual Budgets are a key component of the approach alongside individualised resources, support, increase community capacity and access to the mainstream

..... working with colleagues in Together for Disabled Children, the Transition Support Programme, the Commissioning Support Programme (OPM in particular) to establish IB's as part of a renewed offer of choice and control for disabled children and families.... *'a sleeping giant'*

Taking Control



In Control – Children's Programme

Nic Crosby
Director, Children and Young People
and South West Region Lead (Adults)

nic.crosby@in-control.org.uk

07854 331 487

November 2009

in  **Control**[®]